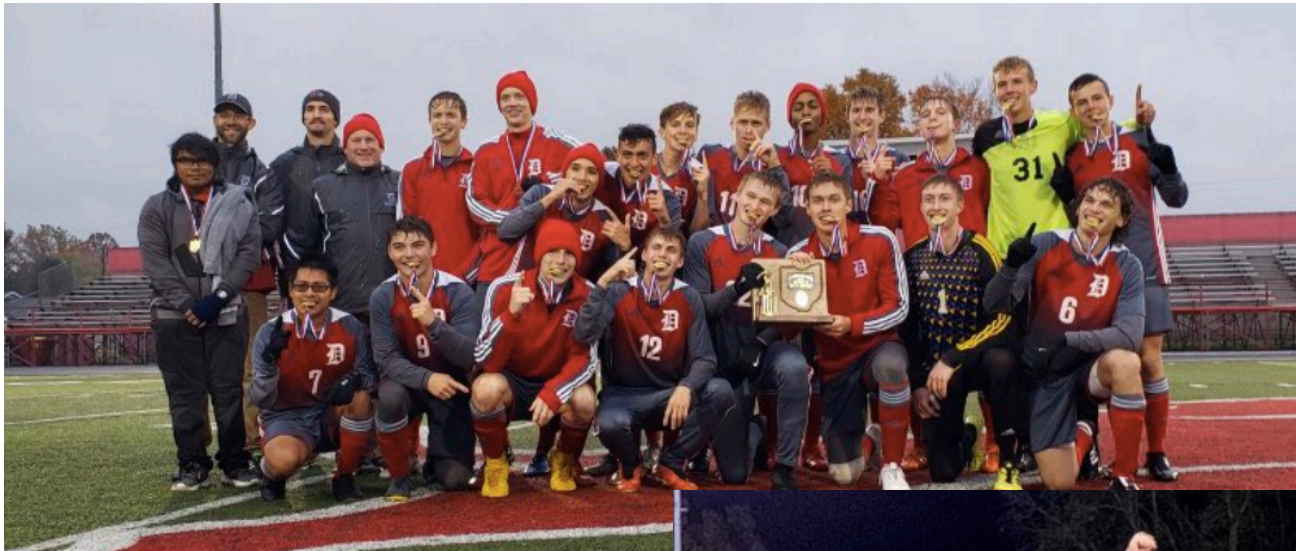
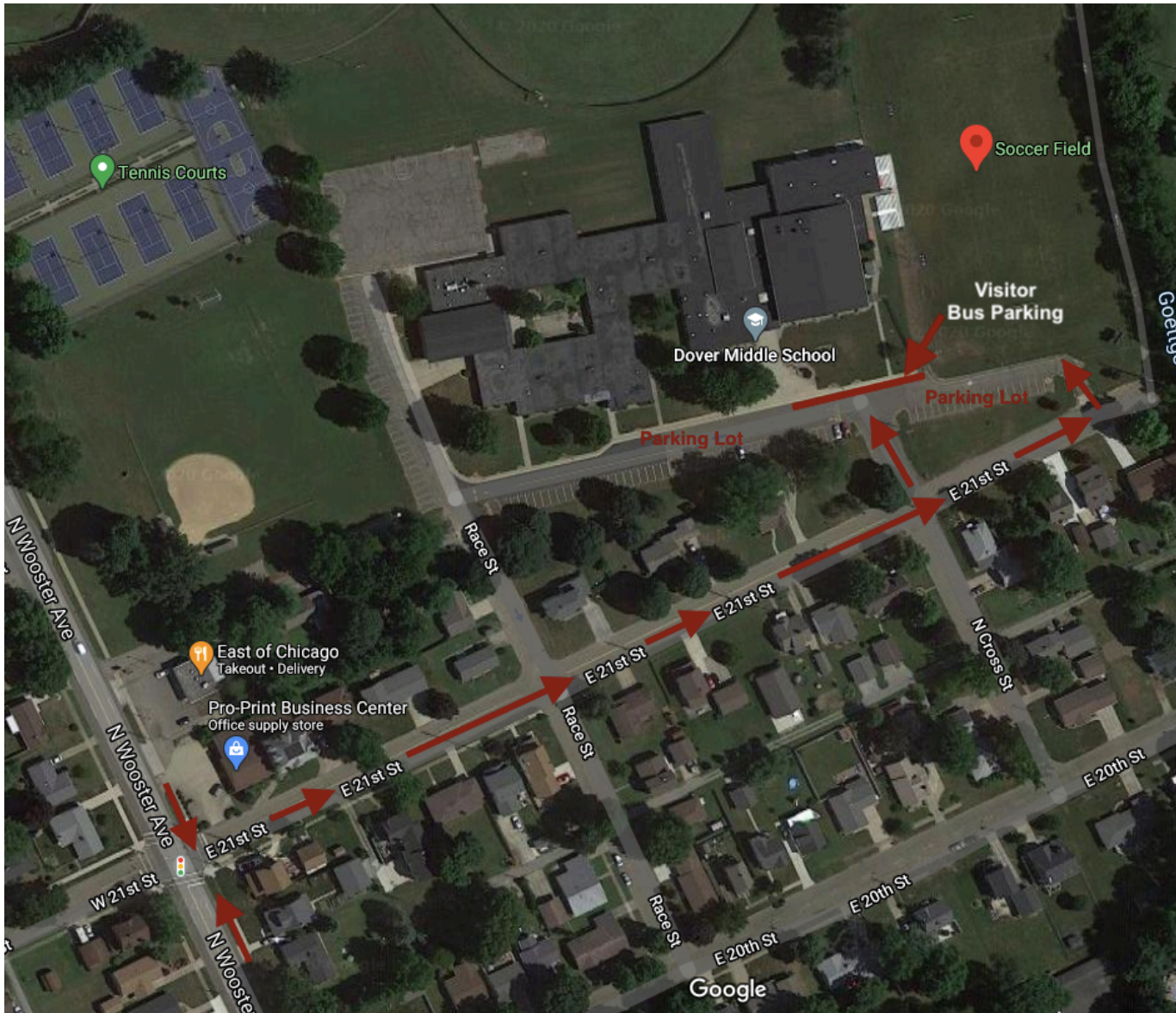


Dover Tornadoes Girls & Boys Soccer Map Overview & Facility Layout



Map To Arrive at Middle School/Soccer Facility



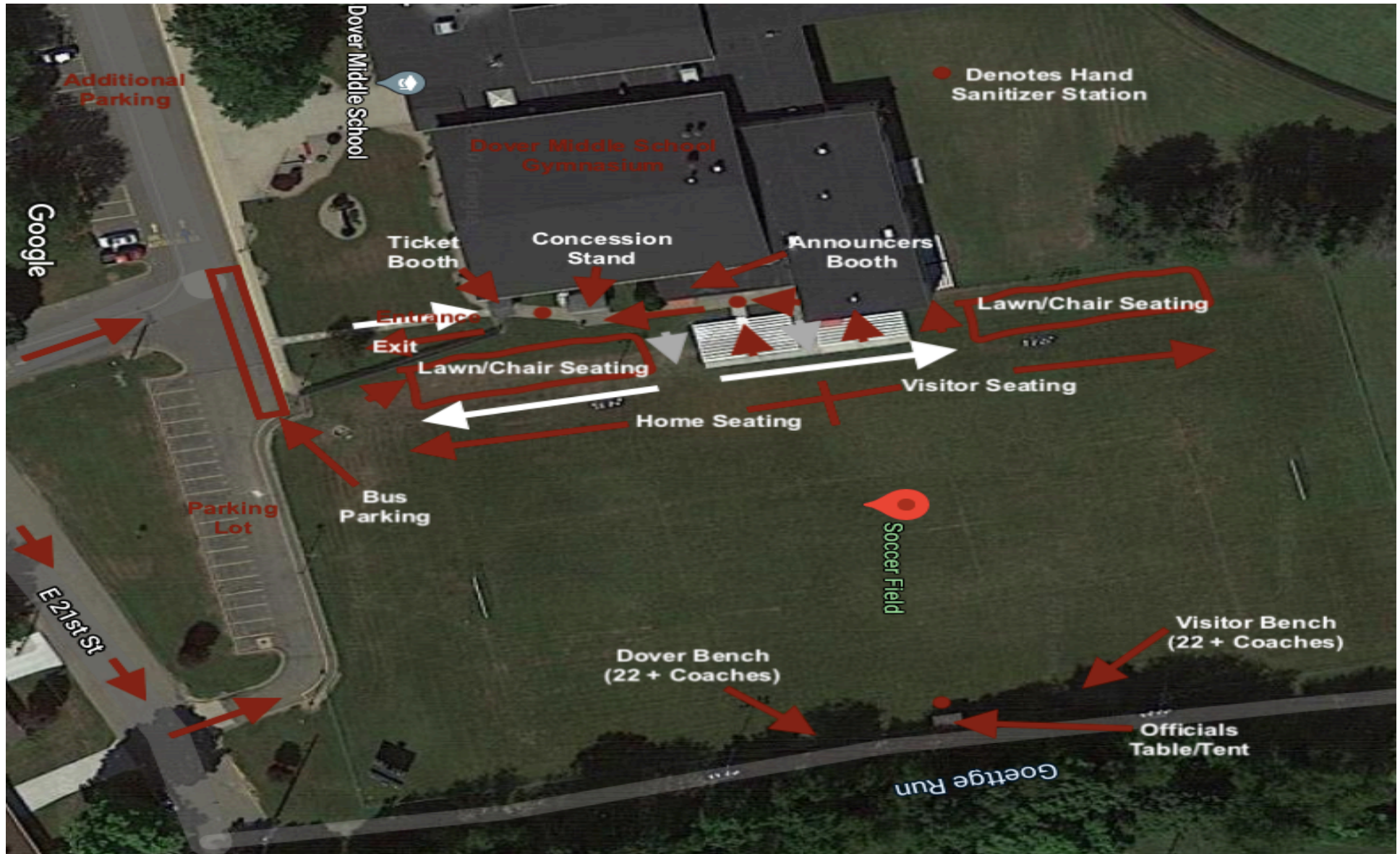
Coming in From North

- If you are traveling from the **North**, you will turn **left** onto East 21st Street from that of North Wooster Avenue (Designated by the path laid out in the image to the left).
- You will continue to head on East 21st Street until it dead-ends at which you will see Dover Middle School and the Soccer Facility off on the **left**.

Coming in From South

- If you are traveling from the **South**, you will turn **right** onto East 21st Street from that of North Wooster Avenue (Designated by the path laid out in the image to the left).
- You will continue to head on East 21st Street until it dead-ends at which you will see Dover Middle School and the Soccer Facility off on the **left**.

Complete Overview and Layout of Soccer Facility



Home/Visitor Seating at Soccer Matches

- Spectators will enter from the gate in which is labeled entrance on the above image for entry to sporting contests.
- From there, spectators will be able to locate their seats by traveling in the direction designated by the gray and white arrows located in the image on the previous page:
 - Spectators will then have to adhere to the following policies while viewing any sporting contest:
 - They are required to wear face coverings at all times.
 - They are to sit in the designated areas that are not marked off.
 - They are to sit with their family groupings and not exceed an eight-person group.
- If a spectator would leave their seats, they then must follow the crimson arrows (NOT the crimson arrows designated for the Home/Visitor seating areas) to leave from the seating area in which they are located.
- They will then again follow the gray and white arrows designated in the image on the previous page to relocate to the seating area in which they are viewing the sporting contest.
- Before locating seats, there will be a hand sanitizer station located at various areas noted on the image on the previous page for the convenience of spectators.
- Upon completion of the sporting contest, spectators will exit the facility following the path designated by the crimson arrows and leave through the gate at which they entered the facility (see image on previous page). We ask upon leaving you be courteous to other groups and maintain a proper distance.